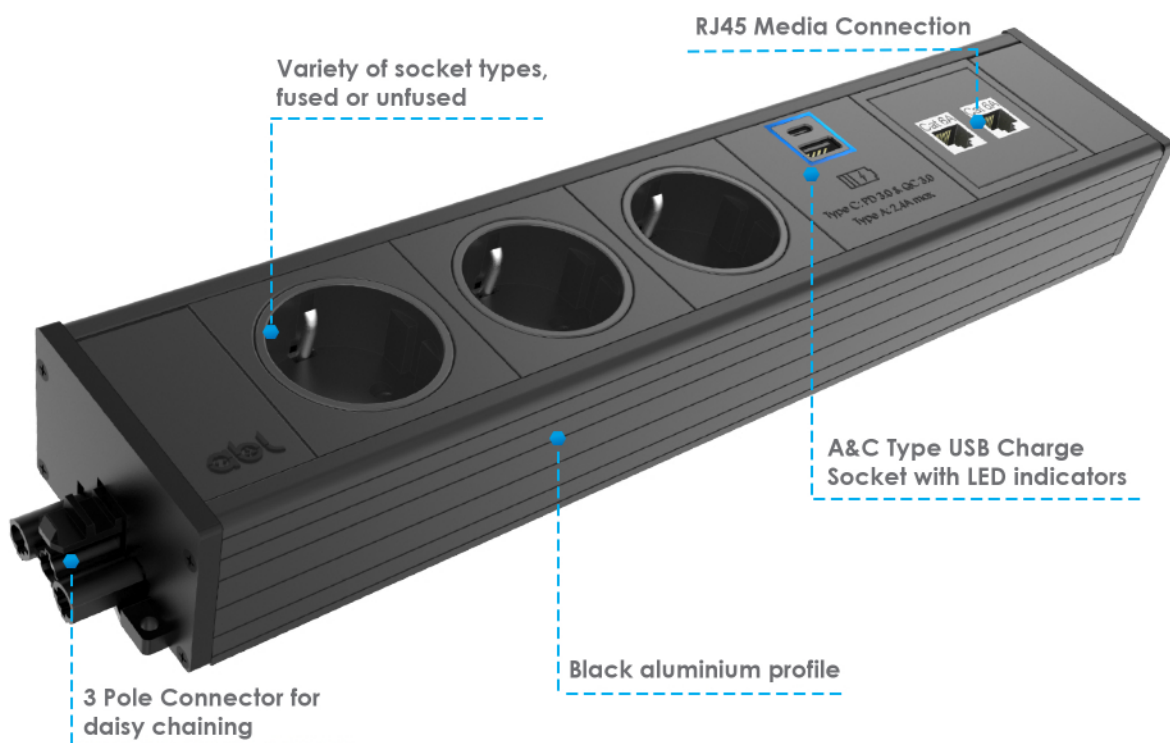


UNDER DESK POWER MODULE UDM

UDM is an easily installed, under desk power module. It is custom made, allowing the choice of different socket types, USB charge socket and RJ45 media connection. The integrated 3 Pole Connector allows daisy chaining with multiple UDM modules or other similar devices, up to six sockets max.



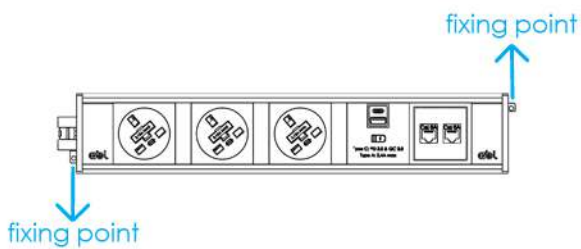
FEATURES

- The unit complies with IEC 60884-1:2002 + A1:2006 + A2:2013
- The module is available in Black, with Black aluminium profile
- Available in variations of sockets, USB charge sockets and RJ45 media connections
- Integrated 3 Pole Connector enables daisy chaining with other compatible products
- When used with ABL Conference Top Access, it is perfectly suitable for meeting rooms
- It is easily installed and fits perfectly into ABL wire basket. Alternatively secured under the desk



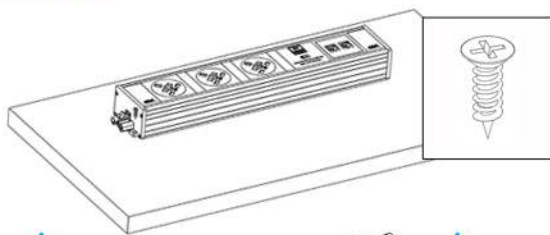
UNDER DESK POWER MODULE UDM

INSTALLATION INSTRUCTIONS

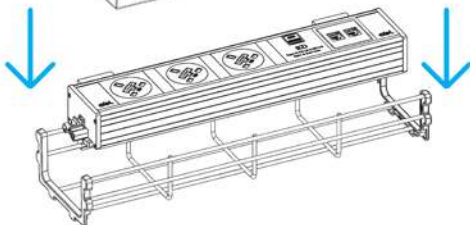


OPTION 1 - Fix the module onto a flat surface

1. Check the screw fixing points on the module



2. Fixate using one Philips screw M3x18 on each side

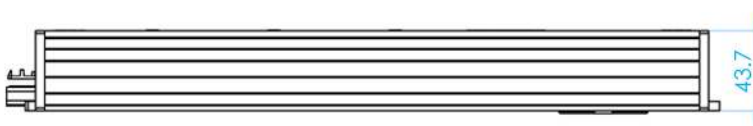
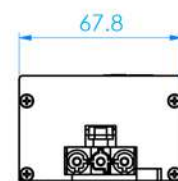
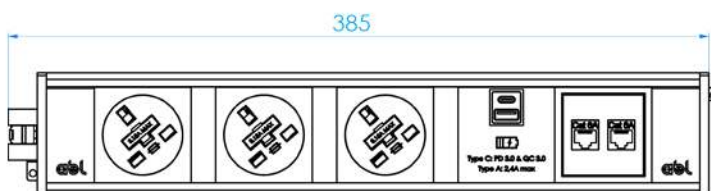


OPTION 2 - Fix the module into a wire basket

Simply place the module into the wire basket

DIMENSIONS

*NOTE - The module length depends on the required configuration





UNDER DESK POWER MODULE UDM

AVAILABLE SOCKET TYPES AND CONNECTIONS



INTERCHANGEABLE MULTIMEDIA PLATES

ABL's IMP (Interchangeable Multimedia Plates) allows the end user to swap and change configurations within their chosen power module with ease. This new, flexible design benefits the end user as they have the choice of changing their module configurations to various multimedia connections all by themselves and according to their preferences.

